

20

COMMUNITY | OF GREATER
FOUNDATION LAFAYETTE

21

*The Community Foundation
of Greater Lafayette
encourages and facilitates philanthropy,
manages and invests funds,
and allocates grants - enriching the lives
of those we serve.*

**COMMUNITY
FOUNDATION
OF GREATER
LAFAYETTE**
Inspiring Greater

A LOOK INSIDE

Partners in Possibility	2
We are on a Mission	3
Community Spirit	4
Many Ways to Give	6
Foundation Stewardship	7
Promising Gifts to Come	11
Donors Spotlight	12
Thanking Those Who Give	13
Gold Key Society	16
Doing Good through Grants	17
Grants Awarded	18
How to Apply for a Grant	23
Investing in Education	24
Fiscally Responsible	26
Leading the Way	28





A Reason to Celebrate

2021 gave us the opportunity to celebrate The Community Foundation of Greater Lafayette's 50th Anniversary. The long-awaited event, delayed a year due to the pandemic, allowed us and our closest friends to reflect on the achievements of The Foundation over the last 50 years.

But what is there to celebrate? When reflecting on our 50-year journey, we were reminded time and time again that The Foundation is simply a conduit. We exist to help bridge the gap between passionate philanthropists and those nonprofits. Without the generosity of the donors we engage with, The Foundation would be powerless in grantmaking. Without the nonprofits working every day with our community's children, vulnerable, and needy, The Foundation would fail to have a purpose.

We have come to understand what we have always known — that The Foundation has no needs. We exist to serve the needs of our community.

Certainly the growth The Foundation has achieved in our 50 years is admirable. From \$65,000 in assets in 1970, to \$87.4 million in 2021. Also commendable is that with the

growth of the more than 275 funds we administer, we have also been able to increase the size of discretionary grants we can offer local nonprofits. Our first grant to the YWCA was for \$15,000. In 2021, we made our largest discretionary grant to date of nearly \$60,000 to LTHC Homeless Services.

By the end of 2021, we could also celebrate the fact that 62 people had joined our Legacy Society — a group of individuals who have chosen to leave The Foundation in their estate plans. Their commitment ensures that the charitable giving they practiced during their lifetime will live on once they are no longer with us. The needs of our nonprofits will continue to exist, and continue to be met, thanks to our generous Legacy Society members.

Look inside this Annual Report to discover the many ways The Foundation, our donors, and our nonprofit partners, make an impact on the Greater Lafayette community.

Partners in Possibility



Andy Gutwein



W. David Lasater

It is with gratitude that we share encouraging news about the work made possible in 2021, thanks to your support. Together we are a team in this game of life, changing possibility into reality for those we serve. The Community Foundation is honored to be a conduit between those who can help and those who need help. Together, we are Inspiring Greater.

In this report, you will also read about the care our board, volunteers, and staff demonstrate. The result is a united commitment to grow and sustain a vibrant, healthy, and diverse community in Greater Lafayette.

A few highlights of 2021: We accepted gifts totaling \$2,612,883, helped donors open 20 new endowments, and increased our assets to \$87.4 million. In all, 109 nonprofit organizations received grants, and 43 individuals received scholarships totaling \$2.03 million. It is especially exciting to note that the 20 new endowments were established in a year without a large-scale matching campaign available, proving the immense dedication and generosity of our donors.

Other community activities included hosting the Douglas W. Eberle Board Governance Series and quarterly meetings of 100+ Women Who Care and Men Who Give. These two giving groups comprised of over 218 members awarded grants to eight local organizations totaling \$82,900. Greater Lafayette is fortunate to have such generous community-minded individuals who care about the greater good.

The Foundation continues to support the Wabash Heartland Innovation Network (WHIN). The \$38.9 million Lilly Endowment Inc. initiative accelerated in 2021. The range of work is highlighted in this report.

We are grateful to do the work we do and to report our successes.

Thank you.

Andy Gutwein | *Chair*

W. David Lasater | *President and CEO*



NEW AND ENDURING ENDOWMENTS

Tara Balfe Clifford Scholarship
Jim and Mary Beth Buescher Endowment
Dennis and Diane Carson Family Endowment for Kossuth Street Baptist Church
Ron and Jan Ditto Endowment
Fred R. and Mary H. Ford Endowment Fund
McBride Family Endowment for the Food Finders Food Bank Backpack Program at Miller Elementary
Stan and Kay Mithoefer Endowment for Imagination Library
Richard C. and Betty M. Nelson Endowment
John L. and Marian W. Oberholtzer Endowment
Props Family Endowment

Ruthie Shook Endowment for the Food Finders Food Bank Backpack Program
Ruthie Shook Endowment for Lafayette Urban Ministry
Tom and Mary Jo Sparrow Endowment for Food Finders Food Bank
Mary Jo and Tom Sparrow Endowment for Imagination Library
Gary and Connie Standiford Endowment
Betty Suddarth Endowment for Imagination Library
Sycamore Audubon Society Endowment
Truitt Family Endowment for Preschool Literacy
Donald and Mary Twiddy Endowment
Tom Walsh Endowment for Tree Lafayette



We are on a Mission

Every facet of our work is guided by well-planned and well-executed principles and practices.

OUR PURPOSE

To inspire, nurture, and practice philanthropy, stewardship, and leadership in the community we serve.

SIMPLICITY

Establishing a fund is easy. Donors meet with Community Foundation representatives to review options and The Community Foundation handles the paperwork and the process.

PERFORMANCE

A permanent entity, The Community Foundation preserves the principal of funds, generally disbursing a portion of the investment earnings.

FLEXIBILITY

Donors may choose among fund options, using various kinds of assets to start a fund. Funds may be designated for a specific purpose or given without restriction on how the money will be used to benefit the community.

TAX BENEFITS

Contributions qualify for maximum deductibility under tax laws.

ACCOUNTABILITY

Annual independent auditing, tax return filing, and a carefully chosen volunteer board ensure that funds are used in the public interest and as donors intend.

The Farm at Prophetstown

Community Spirit

The Foundation fosters community spirit by supporting giving groups and providing learning opportunities for nonprofit boards.



“Since we have been involved with 100+ Women Who Care and Men Who Give, we have come to realize the importance of The Community Foundation in Greater Lafayette. So many lives are touched by the contributions of many and the exceptional leadership of this organization. Living in this area since 1973, we have seen the many efforts of organizations such as The Community Foundation in making Greater Lafayette a better place to live.”

Jan Ditto, 100+ Women Who Care member
Ron Ditto, Men Who Give member

“We used our grant to provide home repairs and accessibility accommodations to low-income senior homeowners including several furnace replacements, a hot water heater replacement, two plumbing repairs, and exterior handrailing. This grant will enable us to continue to take more repair referrals in the upcoming months.”

Laurie Earnst, Tippecanoe County Council on Aging
100+ Women Who Care grant recipient



Inspiring Greater **POSSIBILITIES**

GROUP GIVING

Men Who Give

77 men reviewed about a dozen nonprofit organizations, and then contributed a combined \$29,400 bringing the total in grants to \$177,600 since its founding. Recipients in 2021 were: Group Homes for Children, Mental Health America – Wabash Valley Region Crisis Center Program, Joyful Journey, and Life Has No Boundaries.

100+ Women Who Care

141 women reviewed about a dozen nonprofit organizations, and contributed a combined \$53,500 to support the following 2021 recipients: Boy Scouts of America, Sagamore Council (Cary Camp), YWCA Dress For Success Strive Program, Mental Health America – Wabash Valley Region Navigator Program, and Tippecanoe County Council on Aging. The total contributed since the group's inception reached \$374,100 in 2021.

BOARD GOVERNANCE SERIES

The 2021 Douglas W. Eberle Board Governance Series, funded by North Central Health Services and co-sponsored by The Community Foundation and United Way of Greater Lafayette provided nonprofit board members and executive directors the opportunity to participate in nine educational sessions focusing on board service. We gratefully returned to in-person sessions in September 2021 since going virtual due to the pandemic in 2020.



WHIN's Living Lab

WABASH HEARTLAND INNOVATION NETWORK (WHIN)

2021 marked the beginning of WHIN's transition to WHIN 2.0, the continuation of WHIN beyond the Lilly Endowment, Inc. grant that gave it birth. WHIN has demonstrated that its model brings new good jobs in the technology sector and WHIN's region-wide LoRaWAN network to serve sensors is now in place, adding even more value to the Living Lab.

2021 accomplishments included:

Purdue has leveraged its WHIN funding to attract a five-year, \$26 million grant from the National Science Foundation to establish the Engineering Research Center for the Internet of Things (IoT) for Precision Agriculture (IoT4Ag). Engineering Research Centers (ERCs) are NSF's flagship engineering program for convergent research to address large-scale societal challenges.

The Purdue-WHIN team has partnered with the Indiana Manufacturing Institute to develop training modules on an Augmented Reality platform.

Ivy Tech's new, WHIN-funded precision agriculture program is serving students, and students who are learning to work in a Manufacturing 4.0 shop have new equipment to enable them to enter the workforce job-ready.

With funding from the Lumina Foundation, WHIN supports a joint-hire at Purdue who is increasing faculty engagement with the Living Lab to benefit Purdue, Ivy Tech and regional K-12 students who are learning to work with big data.

The WHIN Regional Cultivation Fund's elearning project is serving students throughout the region with hotspots on school buses, newly lit-up outdoor learning areas, equipment to help teachers prepare lessons for remote instruction, and devices to help students have access at home.

WHIN is excited about the future and is deeply grateful for the region's support of its mission and programs. Together, we will continue to make the Wabash Heartland a place where globally-competitive businesses will plant and grow, as we work toward prosperity for all of our residents.

Many Ways to Give

Giving to The Community Foundation is as easy as choosing what avenue is most appropriate for you. Donors may establish a fund by transferring assets to The Foundation now, by planning to make a deferred gift later, or by giving both ways.

TYPES OF GIFTS

Gifts of cash

Donors may contribute any amount to any existing fund by check to The Community Foundation of Greater Lafayette. Whether in honor or memory of someone or to meet personal charitable wishes, cash gifts help support many community needs. Donors may also give to an agency endowment to support a specific organization.

Publicly-traded securities

Contributions of securities are attractive to those who have held stocks or bonds for a long time. Donors with appreciated securities can contribute them and avoid significant capital gains taxes.

Life insurance

Donors may name The Community Foundation as owner and beneficiary of a new or existing life insurance policy, receiving a current income tax deduction on premium payments.

Qualified charitable distribution (QCD)

Qualified charitable distribution allows IRA holders, age 70 1/2 or older, to donate to a qualified charity from their traditional or Roth IRA (including inherited) tax-free.

Online giving

Contributions in any amount, charged to donors' credit cards, debit cards, or bank accounts, may be made through a second portal at inspiringgreater.org.

DEFERRED GIFTS

Bequests

Donors may designate bequests to The Foundation in wills or living trusts, in set amounts, as a percentage of an estate's value, or with residual amounts. These bequests are exempt from estate tax.

Individual retirement accounts

Designating The Foundation as beneficiary of an Individual Retirement Account (IRA) is an excellent way to make a charitable gift, using an asset that otherwise might be heavily taxed as part of the donor's estate.

Charitable gift annuity

With a charitable gift annuity, donors agree to transfer cash or stock to The Foundation in exchange for lifetime income. Tax benefits and attractive, age-based payout rates are available.

Charitable remainder trusts

Charitable remainder trusts allow donors to place cash, securities, real estate, or other assets in a trust, which The Foundation invests. The trust provides income to the donor or a loved one for life; the balance goes to The Foundation for a charity of the donor's choice.

ENDOWMENT FUND TYPES

Endowment funds may be started with a \$5,000 gift. Once discretionary and designated funds reach \$10,000 in gifts, grantmaking begins. Distributions on all other funds begin once the endowment

reaches \$25,000, or scholarships reach \$50,000, in gifts. Donors may establish a fund in their name or those they would like to honor.

Advised endowment funds

Advised endowment funds allow donors to participate in grant recommendations. These funds are a viable, cost-effective, and simplified alternative to establishing a private family foundation.

Designated endowment funds

Donors wishing to support one or more specific charitable organizations in perpetuity may establish a designated endowment fund.

Discretionary / unrestricted endowment funds

Discretionary endowment funds are used to address the most pressing community capital needs and are not designated for a specific agency or interest.

Field-of-interest endowment funds

Donors wishing to support a specific interest, such as arts, education, health, children, or the environment, may establish field-of-interest endowment funds. Based on the donor's interest, The Foundation selects appropriate projects to support.

Scholarship endowment funds

Donors who want to help individuals with education or training expenses may establish a scholarship endowment fund in their name or those they would like to honor.

OTHER GIFTS

Memorials, tributes

Gifts in memory of or to honor others may be given to The Foundation for general community use or may be designated to a specific fund.

Foundation Stewardship

275
funds administered

The Community Foundation of Greater Lafayette administers more than 275 funds (plus two held for other community foundations), ranging in size from \$5,000 to over \$3 million. The Foundation serves as steward to those funds listed here in addition to all of the scholarships and funds on the Legacy Society page.

ADVISED FUNDS

Donors or their successors recommend grant distributions.

Allie's Gift
Alpha Endowment Fund
Elizabeth Patout Alting Endowment Fund
Anonymous
Roger and Cathy Bauer Family Endowment
Phyllis Boehning Endowment
Mike and Patty Cassidy Spirit of Matthew 25:40 Endowment Fund
Bill and Donna DeFouw Fund
Charles B. Dieterle Randolph Township Fund
Vince and Roxanne Drnevich Endowment
Nicole Ahl Durbin Endowment
Tom and Laurie Frey Endowment
John and Kathy Gambs Endowment
Gernhardt Family Endowment
Gettings Family Endowment Fund
Hearing Loops and Assistive Technology Endowment Fund
Highway Safety Services Fund
Kronos Family Endowment Fund
Lafayette Savings Bank – John Purdue Benevolent Endowment
Lafayette-West Lafayette Urban Forestry Fund
Lehman Family Endowment
Diana Sue Leslie Endowment
William H. and Susan C. Long Community Fund
North Central Health Services Nonprofit Executive Development Initiative Fund
Olson Community Endowment Fund
Olson Fund
Olson Heritage Endowment
Painter Family Philanthropic Fund
Propps Family Endowment

James K. and Mary Jo Risk Family Foundation Fund
Betty Rowe Endowment
Ruckman Family Foundation
Rick and Sarah Schwarz Women's Initiative Endowment
Anne and Kumares Sinha Endowment
Arlan and Sharon Stavnheim Endowment
Stein Family Fund
Taylor Family Endowment Fund
Larry J. Tompkins Memorial Fund
JoAnn P. Vorst Endowment

DESIGNATED FUNDS

Donors support specific organizations; The Community Foundation ensures that grants remain relevant over time.

50th Anniversary Endowment
AgriInstitute, Inc. Endowment Fund
James P. Albregts Endowment Fund for Almost Home, Wabash Center, YMCA, YWCA-DVIP
Janet St. John Amy Fund for Lafayette Symphony Orchestra Foundation
Anonymous Endowment Fund
Art Museum of Greater Lafayette Art League Fund
Art Museum of Greater Lafayette Education Fund
Art Museum of Greater Lafayette Endowment Fund
Art Museum of Greater Lafayette Foundation Endowment Fund
Tom & Leitha Binney for Civic Theatre Endowment
Lynne L. & Paul J. Di Fabio Endowment for the Emergency Shelter at Lafayette Urban Ministry
Gene and Susie Goodson Operating Endowment Fund for Bach Chorale

Hockerman Education Endowment Fund for Bach Chorale
Cynthia Stauffacher Podium Endowment Fund for Bach Chorale
Boardman Family Fund for Wabash Center, Inc.
Burnett Creek Elementary School Endowment Fund
Dennis and Diane Carson Family Endowment for Kossuth Street Baptist Church
Children's Music Foundation Endowment
Civic Theatre Endowment Fund
Jeanne C. and W. Dale Compton Endowment for Lafayette Urban Ministry, Tippecanoe County Council on Aging – Meals on Wheels, Food Finders Food Bank
Barbara I. Cook Endowment for Food Finders Food Bank, Inc.
Court Appointed Special Advocates for Kids, Inc. Endowment
Culver Academies Endowment
Shirley B. Curtis Fund for YWCA – DVIPP
David R. Dove and Mary Lou Dove Endowment Fund for Purdue University
Warren N. Eggleston Legal Aid Endowment Fund
Miriam K. Eppe-Heath Endowment for Wabash Center, Inc.
Farm at Prophetstown Fund
Food Finders Food Bank Endowment Fund
Fowler House Mansion Trust Endowment Fund
Mary Fuqua Endowment for Area IV Agency on Aging and Community Action Programs, Inc.
John and Mary Ruth Graham Endowment for Riggs Community Health Center
Greenbush Cemetery of Lafayette Endowment

FOUNDATION STEWARDSHIP



Servants at Work provides accessibility to locals.

Thomas Griffin Endowment for the 42nd Royal Highlanders
 Haan Family Acquisition Endowment for the Haan Museum
 Haan Family Maintenance Endowment for the Haan Museum
 Haan Museum Endowment
 Habitat for Humanity of Lafayette Fund
 Billie F. Hathaway Endowment for Almost Home Humane Society, Inc.
 Heartford House Endowment
 Winfield F. Hentschel Fund for The Community Foundation of Greater Lafayette
 J. Frederick Hoffman Fund for Tippecanoe County Parks & Recreation Foundation
 Home with Hope, Inc. Endowment
 Indiana University Health Arnett Foundation Endowment
 Joyful Journey Adult Day Service
 Erich Klinghammer Wolf Park Endowment Fund
 Charles E. and Nelda M. Kramer Endowment for Lafayette Family YMCA

Lafayette Chamber Singers, Inc. Fund
 Lafayette Citizens Band Fund
 Lafayette Rotary Club Foundation Fund
 Lafayette School Corporation Education Endowment
 Lafayette Urban Ministry Endowment for the Immigration Clinic Program
 Joseph and Anne Lift Endowment for Students in Tippecanoe County
 Long Center Endowment in Honor of Jan André Bootsma and Ken Bootsma
 Long Center Fund
 LTHC Homeless Services Endowment Fund
 Sonya and Dale Margerum West Lafayette History and Research Center Endowment
 John K. and Prella P. McBride Endowment Fund for Art Museum of Greater Lafayette
 McBride Family Endowment for the Food Finders Food Bank Backpack Program at Miller Elementary
 John K. and Prella P. McBride Endowment Fund for Lafayette Symphony Orchestra

Dr. and Mrs. Richard C. McPherson String Instrument Scholarship Fund, in Honor of their Children, Gregg A. McPherson and Kimberly McPherson Vratil, for Lafayette Symphony Orchestra
 Mental Health America of Tippecanoe County for Crisis Intervention Endowment
 Mental Health America – Wabash Valley Region in honor of Jennifer Flora Endowment
 Robert F. Mertz Endowment Fund for Tippecanoe County Historical Association
 Stan and Kay Mithoefer Endowment for Imagination Library
 Mary Jo and Tom Sparrow Endowment for Imagination Library
 Betty Suddarth Endowment for Imagination Library
 Truitt Family Endowment for Preschool Literacy
 The Mighty Wurlitzer of Long Center Endowment
 Debra St. John Mishler Fund for Lafayette Symphony Orchestra Foundation
 Mr. and Mrs. William F. Moeller Fund for St. James Lutheran Foundation
 Montessori School of Greater Lafayette Endowment
 Tom and Ruth Moran Endowment for Civic Theatre
 National Alliance on Mental Illness of West Central Indiana – (NAMI-WCI) Endowment
 New Community School Fund
 NICHES Endowment
 Edgar B. Olson Endowment for the Long Center
 Omega Columbarium Fund for First United Methodist Church of West Lafayette
 Richard C. and Helen M. Overmyer Endowment Fund for First Christian Church of Francesville, Indiana
 Louis Pearlman, Jr., Fund for Lafayette Symphony Orchestra
 Pookie Endowment for Sycamore Audubon Society
 Andrew P. Powers Endowment for Big Brothers Big Sisters of Greater Lafayette, Inc.
 Dr. Wendell A. and Eleanor C. Riggs Endowment for Riggs Community Health Center
 Right Steps Child Development Centers Endowment
 Kirby and Carolyn Risk Endowment Fund for Leadership Lafayette, Tippecanoe County Historical Association, and Art Museum of Greater Lafayette

Risk Family Endowment for Junior Achievement

Ruthie Shook Endowment for the Food Finders Food Bank Backpack Program

Ruthie Shook Endowment for Lafayette Urban Ministry

Sidney "Sarge" and Jo Sargent Endowment Fund for Tippecanoe Arts Federation

Mickey Shook Memorial Fund for Art Museum of Greater Lafayette

Christy Smith Leadership Lafayette, Inc. Endowment

Sons of Abraham Congregation Cemetery Endowment

Tom and Mary Jo Sparrow Endowment for Food Finders Food Bank

Spring Vale Cemetery Endowment Fund

Stefaniak Family Clarinet Endowment Fund for Lafayette Symphony Orchestra

Stefaniak Family Flute Endowment Fund for Lafayette Symphony Orchestra

Marion W. and Jerome J. Stefaniak Fund for YWCA

Phil and Jan Sterner Family Endowment for Wabash Center

Sycamore Audubon Society Endowment

Joe Tiller Chapter Endowment

Tippecanoe Arts Federation, Inc. Endowment Fund

Tippecanoe Arts Federation Endowment Fund in Memory of Suzie Coles

Tippecanoe Chamber Music Society, Inc. Endowment

Tippecanoe County Council on Aging, Inc. Endowment Fund

Tippecanoe County Historical Association Endowment Fund

Tippecanoe County Imagination Library Fund

Tippecanoe County Parks and Recreation Foundation Endowment Fund

Tippecanoe County Public Library Endowment Fund

Tippecanoe County Public Library Foundation, Inc. Endowment

Tippy Connect Young Professionals Endowment Fund

Tree Lafayette Endowment Fund in Honor of Larry L. Rose

Lyn Treece Boys and Girls Club Fund

Unitarian Universalist Church Kay Asher Religious Education Endowment Fund

Unitarian Universalist Church Building Endowment Fund

Unitarian Universalist Church Jean B. Carlson General Endowment Fund



West Lafayette Tree Friends

Unitarian Universalist Church Ferris-Harvey Social Justice Endowment Fund

United Way Endowment Fund

Arvind and Karen Varma Endowment for Bharatiya Temple and Cultural Center of Greater Lafayette

Dr. Harry M. Von Tobel Endowment Fund for Long Center

Wallace Triangle Island Endowment Fund

West Lafayette Public Library Endowment

West Lafayette Tree Friends Endowment

Willowstone Family Services Endowment

Richard D. Wood Scholarship Fund

Susan and Kingsley Wu Charitable Endowment Fund for Civic Theatre of Greater Lafayette, Lafayette Symphony Orchestra, and Art Museum of Greater Lafayette

YMCA Camp Tecumseh Fund

Pamela Kay Underwood Kerr Endowment for YMCA Camp Tecumseh

Tom Walsh Endowment for Tree Lafayette

Tony Zamora Jazz Club Endowment

DISCRETIONARY FUNDS

Unrestricted, or discretionary, grants originate from endowment funds that give The Community Foundation flexibility to fund changing community needs.

100+ Women Who Care Endowment

James H. and Sandra H. Bodenmiller Endowment

Jim and Mary Beth Buescher Endowment Community Fund

Barbara I. Cook Endowment

Cook Medical, Inc. Endowment

Lynne L. & Paul J. Di Fabio Endowment

Disaster Relief Fund

Ron and Jan Ditto Endowment

Drnevich Family Endowment

Duncan Fund

Douglas W. Eberle Endowment

Warren N. Eggleston Fund

Families Serving Greater Lafayette Endowment

Fred R. and Mary H. Ford Endowment Fund

LaNelle A. and Leslie E. Geddes Fund

Pris Gerde Endowment

Michael and Carolyn Gery Family Endowment

Marjorie Gipe Endowment

Eugene and Marilyn Glick Blue Ribbon Fund in honor of Rachel E. Faust

Max and Elsie Goken Endowment Fund

Connie F. and Richard E. Grace Endowment

Andy and Linda Gutwein Endowment

Dr. Caroline Hass Endowment

Gary and Shelly Henriott Endowment

Steve and Pam Horne Endowment

Les and Rita Huddle Endowment

Robert and Dorothy Hughes Community Fund

FOUNDATION STEWARDSHIP

John C. Jamison Endowment
 Greg and Barb Kapp Endowment
 Jack and Leta Kelley Endowment
 Jim and Nancy Klusman Community Endowment Fund
 Lasater Family Endowment
 Lilly Endowment, Inc. Fund
 T.L. Lin and C.C. Wu Endowment
 Ryan and Stephanie Long Family Endowment
 Elizabeth Mackay Endowment
 Sonya L. and Dale W. Margerum Endowment
 Martin Family Endowment
 David and Anita McGaughey Endowment
 Men Who Give Endowment
 Mick and Deb Mikels Family Endowment
 Stan and Kay Mithoefer Endowment
 Betty M. Nelson Community Endowment Fund
 Richard C. Nelson Endowment
 Richard C. and Betty M. Nelson Endowment
 Mariellen and Gerry Neudeck Endowment
 John L. and Marian W. Oberholtzer Endowment
 The Kathryn E. Olson Endowment
 Parent Family Endowment
 Thomas M. Price Family Endowment
 George and Nerlene Ramsey Endowment Fund
 Richard and Violet Road Endowment Fund
 Linda Rohrman Family Endowment
 Marianne and Larry Rose Endowment
 Russell Family Endowment
 Charlie Shook Endowment
 James C. Shook Endowment
 John and Jane Smith Family Endowment
 Kendall S. and Mary Carson Smith Fund
 Linda M. and Robert S. Sorensen Endowment
 Mary Jo and Tom Sparrow Endowment
 Gary and Connie Standiford Endowment
 STAT Endowment
 Dr. Jerome J. Stefaniak Endowment
 Suddarth Endowment
 Burr and Anne Louise Swezey Fund
 Donald and Mary Twiddy Endowment
 Sally Watlington Community Endowment Fund
 Bob and Marilyn Whitsel Endowment Fund



Food Finders Food Bank makes use of new shopping carts at the Market Pantry.

FIELD-OF-INTEREST FUNDS

Donors focus on particular charitable areas; The Foundation assures that their wishes are carried out.

Arts & Humanities

Louisa Lee France Endowment Fund for Music Education for Disadvantaged Children

Education

Education Fund for Tippecanoe County
 Mithoefer Family Endowment for Preschool Literacy
 Betty M. Nelson Endowment for Literacy

Environment & Animals

George and Betty DeVault Fund for Community Beautification
 Virginia B. Huth Endowment Fund for Community Beautification
 Lafayette Savings Bank Wabash River Enhancement Endowment
 Pookie and Gracie Dog Rescue Fund

Health

Indiana Care Circle Fund
 Esther L. McConaughay Endowment Fund for Cancer Research and the Care and Treatment of Cancer Patients
 Suicide Prevention Fund

Human Services

Linda Bowman and Glenn Tompkins Children's Endowment
 Fund for Children's Needs
 John and Marjorie Martin Endowment for Health and Human Services
 Robert B. and Patricia Payton Truitt Endowment

Randy and Kathy Vernon Endowment for At-Risk Youth

Public & Society Benefit

Pookie and Gracie Endowment Fund

CHARITABLE REMAINDER TRUSTS

Donors develop a charitable legacy in partnership with the Foundation.

Anonymous Trust for a field-of-interest fund
 Barker Trust for the McConaughay Fund
 DeVault Trust for the George and Betty DeVault Fund
 Mayerstein Trust for the Buffy and Alice Mayerstein Fund
 St. John Trust for the C. Virgil and Ruth W. St. John Fund and other charitable purposes
 James C. Shook Charitable Remainder Annuity Trust III for the James C. Shook Endowment
 Watlington Trust for Sally Watlington Endowment

CHARITABLE GIFT ANNUITIES

Donors set up a charitable legacy in exchange for income during their lifetimes.

Beverly H. Gettings for The Community Foundation of Greater Lafayette Unrestricted Fund
 Betty M. Nelson for Betty M. Nelson Endowment Fund

Promising Gifts to Come

Planning to contribute to The Community Foundation through a bequest, charitable gift annuity, or charitable remainder trust fulfills the giving wishes of many in our community. We appreciate the promised gifts of these individuals, known as our Legacy Society members, who have chosen to include The Community Foundation in their estate plans.

WILL BEQUESTS

Donors include The Community Foundation in their estate plans. Please contact Candy Silver at The Foundation to be listed.

Anonymous (9)
Janet R. Achor
Tom and Mary Arth
Jacob J. Bahler
Richard Boehning
Linda Bowman
Maurie and Mary Jane Denney
Christine Ahl Durbin
Jennifer and Robert Eberly
Miriam Eppler-Heath
Fred and Mary Ford
Tom and Laurie Frey
John and Kathleen Gambs
Dennis and Jeanne Gernhardt
Pris Gerde
Mike and Carolyn Gery
Beverly Gettings
Bill and Gail Gettings
Andy and Linda Gutwein
Bob and Ellie Haan
Cherie Hanson
Gary and Shelly Henriott
Mark and Susan Hermodson
Dorothy J. Hughes
Joan Anne Hughes

Martin and Patty Jischke
David and Sue Lasater
Jim Leslie
Dave and Carol Luhman
Mark Lundstrom
Buffy and Alice Mayerstein
John and Prella McBride
David and Anita McGaughey
Stephen and Linda Miner
Betty M. Nelson
Rick Olson
Sandy Pearlman
George and Nerlene Ramsey
Jim and Mary Jo Risk
Linda Rohrman
Larry and Marianne Rose
Brock and Jennifer Russell
Richard R. and Sarah A. Schwarz
Ruthie Shook
Meddie and Candy Silver
Bob and Linda Sorensen
Ruth W. St. John
Gary and Connie Standiford
Glenn Tompkins
Susan Howell Ulrich
Randall Wagner
Thomas J. Walsh
Sarah J. Watlington
Jake and Mary Ann Wiebers

Homegrown Heroes Paying It Forward

Michael and Carolyn Gery stayed in Greater Lafayette after graduating from West Lafayette High School (WLHS) and Purdue University to build their careers and raise their three boys. Mike taught school in WLHS and served as State Senator for 24 years before becoming the executive assistant for Governor O'Bannon. Carolyn worked at Purdue for 35 years serving as the President's Council's executive director and later as the University Development Office's associate vice president.

"We are grateful for the quality of life provided by this diverse and nurturing community," said Carolyn. "We think that to give back by making a legacy gift to The Community Foundation is one of the best ways to show our gratitude."

The Michael and Carolyn Gery Family Endowment is an unrestricted legacy gift to be used at the Board's discretion based on the community's needs. Having served on the Board of Directors for two terms (Mike as president and Carolyn as vice president), they personally learned how important The Community Foundation is to Greater Lafayette's success.



Carolyn and Michael Gery

Donor Spotlight



Richard and Sarah Schwarz

BUILDING BRIGHTER FUTURES

Sarah and Richard Schwarz devoted their careers to building up others. Living in Lafayette for nearly 50 years, Sarah, a former board member, is no stranger to The Community Foundation.

She is a charter member of 100+ Women Who Care who served on its first steering committee. She has been a Gold Key Society member, imparting knowledge of how endowments favorably factor in estate planning. Together, they established a donor-advised fund, the Rick and Sarah Schwarz Women's Initiative Endowment. Sarah is very excited about the new program at the YWCA empowering women.

Inspiring Greater **POSSIBILITIES**

TRIBUTE TO THE TORCHBEARER

Selected as one of the 12,467 torchbearers of the 1996 Summer Olympic Games in Atlanta, Georgia, Virgil St. John carried the Olympic torch through a leg in West Lafayette in the nearly 17,000-mile torch relay across America. He was chosen by virtue of being a "community hero." That moniker described the lives of Virgil and his wife, Ruth, as they quietly contributed to the betterment of the community.

Virgil became involved in many community boards, such as Lafayette Life, The Community Foundation of Greater Lafayette, Long Center, Friends of Convocations, Lafayette Symphony, Purdue Research Foundation, Bank One, and Greater Lafayette Commerce. "All of the areas that Dad approached, discussed, or worked on involved our mother, Ruth St. John," said their daughter Deb St. John Mishler. "Together, they brought about a total greater than the sum of their parts!"

St. John's legacy was the hope to leave the community a better place. Their designated endowments include the Omega Columbarium Fund for the First United Methodist Church in West Lafayette and individual funds in honor of their daughters, Deb and Jan, for the Lafayette Symphony Orchestra Foundation. The fourth endowment, the C. Virgil and Ruth W. St. John Fund, was established as a legacy gift which became a discretionary fund after the couple passed away. Annual distributions from the fund become vital community grants. Although the kindhearted, generous, and civic-minded St. Johns are gone, we express our gratitude and consider them community heroes who carried the torch to light the path for others.



Ruth and Virgil St. John

Thanking Those Who Give

In 2021, these 431 donors generously contributed to The Community Foundation

Pamela Abney-Welsh	Rachelle Brand	Eric and Julia Demerly	Rob Galbraith
Nancy Ahl	Karl and Nancy Brandt	Jane Denges	John and Kathy Gambs
Susan Allen	Beth Branum	Ned Derhammer	James and Marcia Garland
Russell and Barbara Allison	William Brechtel	Dan and Jacquie Dexter	Floyd and Patricia Garrott
Jim Anderson	Ron and Margaret Brender	John and Theresa Dick	Roger Gastineau
Jessica Antoni	Andrew Brightman and Holly Jaycox	Amber Dilling	Pris Gerde
Franklin Arkenberg	James and Kitty Brooks	Marc and Beth Ditto	Dennis and Jeanne Gernhardt
Art League of the Art Museum of Greater Lafayette	Joel and Mary Brooks	Roland and Janis Ditto	Danielle Gernhardt
Tom Arth	JoAnn Brouillette	Sandie Donahue	Mike and Carolyn Gery
Stephen Ash	Margaret Buchanan	Megan Dorsey	Melinda Gilbert
Susan Aufderheide	Molly Bulger	Iris Dowden	Susan Gommel
Iya Awramtchuk-Klim	Joe and Connie Bumbleburg	Dedra Downham	Hallie Gorup
Michael Baker	David Bridges and Vicki Burch	Peg Downham	Carl and Lynn Griffin
Joseph and Clarinda Balagtas	Jonas Burgett	Ellen Dran	Bob Griffiths
Jim Buescher Estate	Kate Burke	Barbara Drescher	Karen Grubber
Tara Balfe Clifford	Annette Burket	Vincent and Roxanne Drnevich	Michael Gunderson
Ball Eggleston PC	Thomas and Mary Ann Burns	Carol Du Clos and Megan Brown	Andy and Linda Gutwein
Roger and Elizabeth Bangs	Tom and Kathy Busch	Joseph Dufficy	Brent and Marti Gutwein
Joan Banning	Mary Caccavo	Peter and Georgia Dunn	Butch and Bev Hancock
Robert and Ellen Barker	Marc and Suzanne Caffee	Harry and Penny Dunwoody	Ann Handy
John and Elizabeth Barrett	Jenny Cahoon	Victor and Joan Dykiel	Ted Harris and Cris King
James Barton	Kitty Campbell	Laurie Earnst	Suman Harshvardhan
Roger and Cathy Bauer	Bill Cardwell	Mary Claire Eberle	Russell Hart
Glenda Bauer	Sue Carr	Jennifer and Robert Eberly	Lawrence Hazzard
Mark Bauer	Dennis and Diane Carson	Terrance Echard	Tressa Heath
Gail Baugh	John Castell Family	Donald and Joellen Edelen	Heath CPA & Associates
Robert and Mary Alice Bauman	Jacqueline Chosnek	Ben and Barbara Edmondson	Alan and Abbe Heller
Zachariah and Heather Beasley	Brandi Christiansen	Harry and Diane Ellison	Gary Henriott and Shelly Fitzgerald-Henriott
John and Penny Bell	Jim Clark	Linda Emberton	Henry Poor Lumber Company
Gerard Benner	Cheryl Coffin	James Erdman	Susan Henson
David and LuAnn Bennett	Thomas Cole and Laura Pitone	Gebhard and Charlene Erler	Mark and Susan Hermodson
Roger and Jane Bennett	Allen Collicott	Janice Ernt	Deb Hester
Sam and Rita Biederstedt	Dan Collins	Michael Faith	Owen Hildreth
Neal and Molly Biggs	Cook Research, Inc.	Constance Farrell	William and Carla Hildreth
Erin Blevins	Mary Corwin	Robert and Melia Farrell	Pam Hillerby
Danielle Bluhm	Joseph and Aurelia Costanza	Roger Feldhaus	Nicole Hird
Jim and Sandy Bodenmiller	Current Topic Club	Bob Feuer	Home With Hope Meridian Health Services
Richard and Penny Boehning	Sam C. Curtis, III	Mary Beth Fitzgerald	Denis Horn
Stuart Boehning	Kelly Cwiertny	Grant and Jennifer Flora	Joe and Sandy Howarth
Kevin Bol	Marcia Daehler	Fred Ford Estate	Jill Howell
Joan Bonnet	Marilynn Dammon	David and Martha Frampton	Joan Hughes
Kevin and Gail Bosman	Beth Dana	Barb Frazee	John and Marlene Huie
Linda Bowman and Glenn Tompkins	Harlan and Heather Day	Tom and Laurie Frey	Jason Huston
	Jerome and Linda Day	Tracy Fristoe	

THANKING THOSE WHO GIVE

Independent Colleges of
Indiana
Patrick Jarboe
Keven Jennings
Martin and Patty Jischke
Joe Tiller Chapter of Northwest
Indiana
Peggy Johnson
Carolyn Jones
Jennie Jones
Bruce and Mary Ann Junius
Mary Nell Kadlec
Greg and Barb Kapp
Christopher Kapp
Kristel Kaye
Christiane Keck
Jack Kelley
Nancy Kildsig
KJG Architecture, Inc.
Angela Klink
Vic and Sheila Klinker
Gloria Klutzke
Barbara Knochel
Deb Kolczak
Kevin Koors
Korschot's Heating and Air, Inc.
Fred and Andrea Kuipers
Lafayette Hearing Center

David and Beth Lageveen
David and Sue Lasater
Denise Laussade
Leadership Lafayette
Laszlo Lempert and Marta Istok
Jim Leslie
John and Deborah Lindenlaub
Mark and Carol Loessel
Tammy Loew
Ryan and Stephanie Long
Jeff Love
Joan Low
David and Carol Luhman
Mark Lundstrom
Gerald and Mary Therese Lynch
Jim and Mary MacDonald
William and Mary Malloy
Jonathan Man
Jerry Marra and Barb Schuster
Kenneth Marra
John and Marjorie Martin
Courtney Mason
William and Janet Mayor
Barbara McBee
John and Prella McBride
J. Scott McBride
Gerald and Cecilia McCarthy

Paul and Mona Lou
McConnaughey
Thomas and Susan McCully
Beth McCuskey
Michael and Shelley McFadden
David and Anita McGaughey
David and Charlotte McGaw
Robert McKee
Ryan McLaughlin
McLaughlin Asset
Management, Inc.
Thomas and Beverly Melichar
Charlene Mencini
Laura Merkin
Steven Meyer
Sara Miedema
Deb Mikels
Ben and Maxine Miller
Bill Miller
Elizabeth Miller
Ann Miller
Allison Miner
Stan and Kay Mithoefer
Susan Mollenkopf
Karissa Mooney
Lee Morrison
Stacy Muinzer
Amanda Murphy

Jenni Murtaugh
Colleen Neal
Betty and Richard Nelson
Suzy Newett
Gary and Jillinda Newsom
Sam and Denise Newton
North Central Health Services
John Lynn and Marian W.
Oberholtzer
Rick Olson
Shirley Olson
Jacqueline O'Neill
Donna Osborn
Timothy and Rhonda Overman
Marianne Mitten Owen
Robert Pahl
Thomas Palfrey and Mary
Weeks
Tom and Deb Parent
George and Mary Parker
Andy and Marty Pavlovich
Robert and Betty Peabody
Louis and Ann Pellegrino
Cheryl Petersohn
Michael and Ellen Phelps
Ann Phillips
Thomas and Susan Pierce
Michael and Nancy Piggott
Daniel and Patricia Plantenga
Julie Pope
Paul Preckel and Janet Winters
Janet Preuss
Terry Printz
Linda Prokopy
Erik and Kathryn Props
George and Nerlene Ramsey
Loren Randall
Dave Raymer
Tim and Molly Reilly
Susan Resh
Jim and Mary Jo Risk
Becky Robledo
Maria Rogers
Linda Rohrman
Josette Rolley
Larry and Marianne Rose
Arthur and Patricia Rosen
Mayor Tony Roswarski
John Rowe



Lafayette Theatre

Nancy Roy
 Brock and Jennifer Russell
 Mark Rutan
 Chip and Jane Rutledge
 Harriet Salzberg
 Christine Sammons
 Jonathan and Alyson Sautter
 Bob and Nancy Schauer
 Sharon Schendel
 Dennis and Sharon Schlott
 Andrea Schmidt
 John and Liz Schneider
 Daisy Schopmeyer
 Steven and Kelly Schreckengast
 Mike and Margaret Schreiber
 Steve and Brynne Schultz
 Paul and Janice Schultz
 Sarah Schwarz
 Jacquelyn Scott
 Joe and Bernie Seaman
 Greg and Corie Shaner
 Dolph and Jackie Sharp
 Joyce Sheets
 Pauline Shen and Robert Wild
 Charlie Shook
 Ruthie Shook
 Meddie and Candy Silver
 Thomas Sinclair
 Kim Skiba
 Elisabeth Slotten
 Dana and Maggie Smith
 Jane Smith
 Greg Smith
 Robert Smith
 Pauletta Smith
 Sheila Smoot
 Susan Soklin
 Jim and Liz Solberg
 Charles Somers
 Bob and Linda Sorensen
 Tom and Mary Jo Sparrow
 Heather Stampfl
 Gary and Connie Standiford
 Janet Stapleton
 Patty Steele
 Kelly Stein
 Tanner Stepp
 Jennifer Stiglic
 Roger and Laurel Strasburger

Barbara Strasburger
 Randy Strong
 Timothy and Barbara Strueh
 Susan Niemczyk
 Betty Suddarth
 Charlene Sullivan
 Steve and Sara Sullivan
 Helen Sunkel
 Larry and Cynthia Svajgr
 Kirsten Szendrey
 Robert and Martha Taylor
 Sarah Templin
 The Marquis Foundation
 The Monday Club
 Bill and Sharon Theobald
 Ernest and Elaine Todd
 Linda Bowman and Glenn Tompkins
 Gary and Cindy Traynor
 David and Kathy Trout
 Joanne Troutner
 Bob and Patti Truitt
 Randy and Krista Truitt
 Jane Turner
 Amber Turner
 Jake and Sayde Uerkwitz
 Marion Underwood
 Unitarian Universalist Church
 United Way of Greater Lafayette
 Laura Vanier
 Randy and Kathryn Vernon
 Laura VonHolle
 Jim and JoAnn Vorst
 James Vrugink
 Dan and Jo Wade
 Cassie Wade
 Michael and Shelley Wadsworth
 Katharine Walker
 Thomas and Barb Walsh
 Mary Waltmann
 Charlotte Mason Warner
 Sally Watlington
 Dave and Susan Webb
 Becky Wellner
 Diane West
 Westminster Village
 Emily Wheeler
 Robert and Dana White



**Vinton Elementary School
 second graders visit GrowLocal's
 Bethany Sharing Garden.**

Mary Ann Wiebers
 Herman and Marcia Wiebers
 Angie Wilhoit
 McKenna Williams
 Kurt and Debra Wilson
 Andrea Wilson
 Suzan Windnagel
 Gary Wolfelt and Esther Chosnek
 Richard and Carol Wood
 Darrell Woodman
 Lane and Sarah Yahiro
 Karl Yost
 Betty Zamora
 Chip Zika
 John and Karen Zika

Acknowledgements

Candoor Payroll & HCM
 Bob and Ellie Haan, Haan
 Mansion Museum of
 Indiana Art
 Jill Coleman
 Jane McLaughlin Anderson
 Natalie Powell, Just Natalie
 Morgan Stanley

431
donors in 2021

Gold Key Society

The Gold Key Society is an exceptional group of professional advisors that have agreed when appropriate to share information with their clients about The Community Foundation of Greater Lafayette to help them achieve their charitable goals.

These advisors play an important role in fulfilling their clients' wishes as well as making Greater Lafayette a better place to live today and tomorrow. We appreciate the Gold Key Society advisors for professionally assisting clients to reach their philanthropic goals through The Community Foundation.

Gold Key Society Members

Alberta M. Barker
Richard L. Bartholomew
Stuart Boehning
Bill Cardwell
Brenda Clapper
William P. Gettings
Robert L. Griffiths
Andy Gutwein

Sue Holder Price
Mark Lillianfeld
David W. Luhman
James T. MacDonald
Bri Madren
John K. McBride
David McGaughey
Jeffery A. Milligan
Karissa Mooney
James F. Olds
Thomas B. Parent
Jennifer Russell
Luke Rutan
Matthew Salsbery
Christopher D. Shelmon
Greg Smith
Patti Truitt
Gloria Weesner

“As a Gold Key member, I am able to connect my clients with personalized services tailored to meet their estate plan and philanthropic needs. “When a client is passionate about their community or a specific cause, The Community Foundation provides that conduit to make that passion a reality.”

Stuart Boehning



Representatives of the 2021 Gold Key Society.

Doing Good through Grants



YMCA's Before and After School Care provides bus transportation for local students.

WHEELS FOR THE BUS

Fun and learning don't stop when the school bell rings. The Lafayette YMCA offers before and after school care for more than 750 school-age youth at 15 sites across Tippecanoe County. The Y's program consists of arts, physical fitness, nutrition, homework help, sports, and character building. Having a safe and enriching environment to learn and play is important to children and crucial to working parents. The program is open to all and provides scholarships to those who qualify. Several schools offer YMCA daycare at their schools. For others, the YMCA offers round-trip bus transportation to the YMCA from their schools.

The current buses were due for replacement in 2021, but COVID-19 diverted monies to support daycare for essential workers, virtual programming for families, and senior

care. Furthermore, the pandemic reduced revenue streams leaving a lack of funds for capital purchases. The Community Foundation stepped in and granted \$50,789 for one new mini-bus, which transports children back and forth from Straight Arrow Day Camp.

"We are so grateful to The Community Foundation of Greater Lafayette for understanding and supporting the need to keep our kids and community safe," said Paul Cramer, YMCA CEO. "By helping us upgrade our fleet of transport vehicles, The Foundation has joined us in our commitment to foster youth development and build a healthy community for all. Thank you for your partnership; we are very excited to get the bus on the road and continue to change young lives for the better through quality programs and services!"



"My family and I are honored for the opportunity to work with The Community

Foundation of Greater Lafayette. Together we are able to achieve mutual goals to touch the lives of those in need and support our community. We have been blessed to be part of the Greater Lafayette community and endowments and grants are a lasting legacy to share our gratitude."

Dennis Carson



"The ability to understand critical challenges and convene individuals to address

urgent and complex issues is imperative in keeping the Greater Lafayette area vibrant. This is an area where The Community Foundation performs so effectively. We often think of The Community Foundation in its role in helping individuals and families establish their own targeted giving funds, yet I am ever appreciative of The Foundation's commitment to aid in a more visionary approach to community engagement."

Pris Gerde

Grants Awarded

In all, 109 nonprofit organizations received grants, and 43 individuals received scholarships totaling \$2,037,114 in 2021. Many grants were for those one-time capital expenses that nonprofits struggle to fund and desperately need. Soliciting and screening applications, verifying eligibility of recipients, and awarding funds are vital ways The Foundation is leading philanthropy initiatives and enriching lives.

Groups Receive Over

\$2M

ADVISED

\$ 398,715 GRANTED

\$ 814	Allie's Gift Endowment
\$ 7,419	Alpha Fund
\$ 6,000	George Balfe Scholarship Fund
\$ 1,600	Roger Blalock Scholarship Fund
\$ 24,000	CHS Women Pursuing STEM Scholarship Fund
\$ 2,500	Samuel and Pearl Mae Fritts Cole Scholarship Fund
\$ 7,500	Samuel C. Curtis Scholarship Fund
\$ 55,131	Bill and Donna DeFouw Fund
\$ 11,700	Charles B. Dieterle Randolph Township Fund
\$ 1,182	Vince and Roxanne Drnevich Fund
\$ 1,276	John and Kathy Gambs Endowment
\$ 1,000	Gernhardt Family Endowment
\$ 39,364	Highway Safety Services Fund
\$ 7,000	Jefferson High School Alumni Association Scholarship Fund
\$ 9,000	Kronos Family Endowment Fund
\$ 2,278	Lafayette Savings Bank – John Purdue Benevolent Endowment
\$ 1,015	Lafayette-West Lafayette Urban Forestry Fund
\$ 5,000	Diana Sue Leslie Endowment Fund
\$ 22,000	William H. and Susan C. Long Community Fund
\$ 15,000	Mike and Patty Cassidy Spirit of Matthew 25:40 Endowment
\$ 8,668	Olson Fund
\$ 84,078	Olson Community Endowment Fund
\$ 8,299	Olson Heritage Fund
\$ 2,250	Harlan W. & Dorothy W. Parr Scholarship Fund
\$ 3,350	Roland G. Parrish BCC Scholarship Fund
\$ 1,450	Presidential Leadership Endowment

\$ 24,618	Betty Rowe Endowment
\$ 21,336	Ruckman Family Foundation
\$ 1,473	Anne and Kumares Sinha Endowment
\$ 850	David Smyser Scholarship Fund
\$ 1,342	Arlan and Sharon Stavnheim Endowment
\$ 1,000	Betty M. Suddarth Scholarship Endowment
\$ 22,522	Taylor Family Endowment Fund
\$ 1,700	Larry J. Tompkins Memorial Fund
\$ 10,000	Katie Traynor, RN, Scholarship Fund
\$ 2,000	Truitt Family West Lafayette High School Athletic Leadership Scholarship Fund
\$ 2,000	West Lafayette High School Golden Scholarship Fund

FIELD-OF-INTEREST

\$127,320 GRANTED

At-Risk Youth

\$ 1,990	Randy and Kathy Vernon Endowment
----------	----------------------------------

Cancer Care

\$ 33,595	Esther L. McConaughay Endowment Fund
-----------	--------------------------------------

Children's Needs

\$ 2,220	Linda Bowman and Glenn Tompkins Children's Endowment
\$ 280	Fund for Children's Needs

Childhood Literacy

\$ 20,819	Education Fund for Tippecanoe County
-----------	--------------------------------------

Community Beautification

\$ 1,878	George and Betty DeVault Fund
\$ 4,697	Virginia B. Huth Endowment

Community Benches

\$ 147	Pookie and Gracie Endowment
--------	-----------------------------

Elder Care

\$ 598	Indiana Care Circle Fund
--------	--------------------------

Health and Human Services

\$ 6,370 John and Marjorie Martin Endowment for Health and Human Services

Literacy

\$ 42,931 Betty M. Nelson Endowment for Literacy

Preschool Literacy

\$ 500 Mithoefer Family Endowment for Preschool Literacy

Music Education for Disadvantaged Children

\$ 9,350 Louisa Lee France Endowment Fund

Wabash River Enhancement

\$ 1,945 Lafayette Savings Bank Wabash River Enhancement Endowment

DESIGNATED**\$ 810,343 GRANTED**

\$ 2,529 Thomas Griffin Endowment for the 42nd Royal Highlanders

\$ 2,000 AgriInstitute

Almost Home Humane Society

\$ 12,827 James P. Albregts Endowment

\$ 1,698 Billie F. Hathaway Endowment

\$ 1,567 Area IV Agency on Aging and Community Action Programs Fund

Art Museum of Greater Lafayette

\$ 4,531 Art Museum of Greater Lafayette Art League Fund

\$ 10,094 Art Museum of Greater Lafayette Endowment Fund

\$ 2,349 Art Museum of Greater Lafayette Education Fund

\$ 1,573 John K. and Prella P. McBride Endowment

\$ 5,573 Mickey Shook Memorial Fund

\$ 3,633 Kirby and Carolyn Risk Endowment Fund

\$ 4,750 Susan and Kingsley Wu Charitable Endowment Fund

\$ 5,859 Art Museum of Greater Lafayette Foundation Endowment Fund

\$ 1,353 Andrew P. Powers Endowment for Big Brothers Big Sisters of Greater Lafayette

\$ 784 Children's Music Foundation Endowment

Civic Theatre

\$ 1,053 Tom & Leitha Binney Endowment

\$ 1,565 Civic Theatre Endowment Fund

\$ 1,668 Tom and Ruth Moran Endowment for Civic Theatre

\$ 4,750 Susan and Kingsley Wu Charitable Endowment Fund

\$ 8,193 Jeanne C. and W. Dale Compton Endowment for Food Finders Food Bank

\$ 8,193 Jeanne C. and W. Dale Compton Endowment for The Tippecanoe Senior Center

\$ 2,262 Court Appointed Special Advocates for Kids Fund, Inc Endowment

\$ 540 Culver Military Academy Scholarship

\$ 4,617 Farm at Prophetstown Fund

\$ 528 Fowler House Mansion Trust Fund

\$ 46,299 David R. and Mary Lou Dove Endowment for Purdue University

\$ 620 Greater Lafayette Commerce for Tippy Connect

Haan Museum of Indiana Art

\$ 3,574 Haan Family Acquisition Endowment for the Haan Museum

\$ 40,122 Haan Family Maintenance Endowment for the Haan Museum

\$ 10,087 Haan Museum Endowment

\$ 2,740 Habitat for Humanity of Lafayette Endowment

\$ 2,424 Winfield F. Hentschel Fund

\$ 7,414 Indiana University Health Arnett Foundation Endowment

\$ 1,012 Tony Zamora Jazz Club Endowment

\$ 5,092 Risk Family Endowment for Junior Achievement

\$ 3,022 Erich Klinghammer Wolf Park Endowment Fund

Lafayette Family YMCA

\$ 12,827 James P. Albregts Endowment

\$ 3,069 Charles and Nelda Kramer Endowment

Lafayette Master Chorale

\$ 1,598 Hockerman Education Endowment

\$ 2,509 Gene and Susie Goodson Operating Endowment

\$ 3,745 Cynthia Stauffacher Podium Endowment

\$ 1,084 Lafayette Citizens Band Fund

\$ 33,844 Lafayette Rotary Club Foundation Fund

Lafayette Symphony Orchestra

\$ 2,200 John K. and Prella P. McBride Endowment

\$ 3,600 Dr. & Mrs. Richard C. McPherson String Instrument Scholarship Fund

\$ 3,450 Louis Pearlman, Jr., Fund

\$ 1,500 Stefaniak Family Clarinet Endowment Fund

GRANTS AWARDED

\$ 1,700 Stefaniak Family Flute Endowment Fund
 \$ 4,750 Susan and Kingsley Wu Charitable Endowment Fund

Lafayette Symphony Orchestra Foundation

\$ 1,760 Janet St. John Amy Fund
 \$ 1,706 Debra St. John Mishler Fund

Lafayette Urban Ministry

\$ 8,193 Jeanne C. and W. Dale Compton Endowment
 \$ 695 Lafayette Urban Ministry Endowment for the Immigration Clinic Program

Leadership Lafayette

\$10,899 Kirby and Carolyn Risk Endowment Fund
 \$32,290 Christy Smith Leadership Lafayette, Inc. Endowment
 \$12,009 Warren N. Eggleston Legal Aid Endowment Fund
 \$ 844 Joseph and Anne Lift Endowment for Public Schools Foundation

Long Center

\$16,628 Long Center Endowment in Honor of Jan André Bootsma and Ken Bootsma
 \$ 13,913 Long Center Fund
 \$ 1,658 Edgar B. Olson Endowment
 \$ 3,339 Dr. Harry M. Von Tobel Endowment Fund
 \$ 1,016 Long Center Theatre Organ Society
 \$ 5,170 LTHC Homeless Services
 \$ 7,954 Lyn Treece Boys and Girls Club Fund

Mental Health America of Tippecanoe County

\$ 11,511 Mental Health America – Wabash Valley Region in Honor of Jennifer Flora
 \$ 1,536 Mental Health America – Wabash Valley Region
 \$ 2,907 Mr. and Mrs. William F. Moeller Fund for St. James Lutheran Foundation
 \$ 3,959 NAMI – West Central Indiana
 \$ 2,470 NICHES Endowment
 \$14,553 Omega Columbarium Fund
 \$ 395 Pookie Endowment for Sycamore Audubon Society

Riggs Community Health Center

\$ 1,247 John and Mary Ruth Graham Endowment
 \$12,041 Dr. Wendell A. and Eleanor C. Riggs Endowment

\$ 3,896 Spring Vale Cemetery Endowment

Tippecanoe Arts Federation

\$ 9,626 Sidney “Sarge” and Jo Sargent Endowment Fund
 \$ 611 Tippecanoe Arts Federation Endowment in memory of Suzie Coles
 \$ 2,858 Tippecanoe Chamber Music Society, Inc. Endowment

Tippecanoe County Historical Association

\$ 3,633 Kirby and Carolyn Risk Endowment Fund
 \$ 1,610 Tippecanoe County Historical Association Endowment Fund
 \$24,631 Robert F. Mertz Endowment

Tippecanoe County Parks & Recreation Foundation

\$ 37,191 J. Frederick Hoffman Fund
 \$93,335 Tippecanoe County Parks and Recreation Foundation Endowment Fund
 \$ 2,167 Tippecanoe Public Library Endowment Fund
 \$ 1,942 Tippecanoe Public Library Foundation Endowment

Tippecanoe School Corporation

\$ 9,375 Burnett Creek Elementary School Endowment Fund
 \$ 1,000 Richard D. Wood Scholarship Fund

\$ 6,925 Tree Lafayette Endowment Fund in Honor of Larry L. Rose

Unitarian Universalist Church

\$ 1,439 Kay Asher Religious Education Endowment Fund
 \$ 2,609 Building Fund
 \$11,444 Jean B. Carlson General Endowment
 \$ 1,481 Ferris-Harvey Social Justice Fund
 \$73,402 United Way Endowment Fund
 \$ 681 Arvind and Karen Varma Endowment for Bharatiya Temple & Cultural Center of Greater Lafayette Endowment

Wabash Center

- \$ 12,827 James P. Albregts Endowment
- \$ 13,865 Boardman Family Fund
- \$ 707 Miriam K. Eppe-Heath Endowment

West Lafayette Public Library

- \$ 8,587 Sonya and Dale Margerum West Lafayette History and Research Center Endowment
- \$ 1,097 West Lafayette Public Library Endowment
- \$ 2,321 Willowstone Family Services Endowment

YMCA Camp Tecumseh

- \$ 2,485 Pamela Kay Underwood Kerr Endowment
- \$ 1,852 YMCA Camp Tecumseh Fund

YWCA

- \$ 12,827 James P. Albregts Endowment
- \$ 2,455 Marion W. and Dr. Jerome J. Stefaniak Fund

DISCRETIONARY

\$700,736 GRANTED

- \$ 5,040 100 Women Who Care Endowment Fund
- \$ 953 James H. and Sandra H. Bodenmiller Endowment
- \$22,350 Community Fund
- \$ 2,093 Cook Medical Endowment
- \$ 5,189 Barbara I. Cook Endowment Fund
- \$ 873 Drnevich Family Endowment
- \$50,570 Duncan Fund
- \$ 3,986 Douglas W. Eberle Endowment
- \$ 2,652 Warren N. Eggleston Fund
- \$164,056 LaNelle A. and Leslie Geddes Fund
- \$ 397 Pris Gerde Endowment
- \$ 12,493 Marjorie Gipe Endowment
- \$ 1,601 Eugene and Marilyn Glick Blue Ribbon Fund
- \$43,420 Max and Elsie Goken Endowment Fund
- \$ 1,095 Connie F. and Richard E. Grace Endowment
- \$ 510 Andy and Linda Gutwein Endowment
- \$ 1,807 Gary and Shelly Henriott Endowment
- \$ 1,087 Steve and Pam Horne Fund
- \$ 106 Les and Rita Huddle Endowment
- \$ 2,000 Robert and Dorothy Hughes Community Fund



The Arts Federation's Wabash Walls

GRANTS AWARDED

\$ 5,621	John C. Jamison Endowment	\$ 1,904	Sally Watlington Community Endowment
\$ 2,177	Greg and Barb Kapp Endowment Fund	\$ 6,874	Bob and Marilyn Whitsel Fund
\$ 4,025	Jack and Leta Kelley Endowment	\$ 5,000	Robert and Marilyn Whitsel Scholarship Fund
\$ 1,959	Jim and Nancy Klusman Community Endowment	\$ 1,000	Jacob E. and Mary Ann Wiebers Scholarship Fund
\$129,830	Lilly Endowment Fund		
\$ 868	T.L. Lin and C.C. Wu Endowment		
\$46,093	Elizabeth Mackay Fund		
\$ 2,515	Sonya L. and Dale W. Margerum Fund		
\$ 18,149	Martin Family Endowment		
\$ 747	David and Anita McGaughey Endowment Fund		
\$ 4,000	Shirley and Mick McTague Scholarship Fund		
\$ 2,243	Men Who Give Endowment		
\$ 464	Mick and Deb Mikels Family Endowment		
\$ 865	Stan and Kay Mithoefer Endowment		
\$ 3,898	Betty M. Nelson Community Endowment Fund		
\$ 11,072	Richard C. Nelson Endowment		
\$ 1,041	Mariellen and Gerry Neudeck Endowment		
\$10,308	Kathryn E. Olson Endowment		
\$ 518	Parent Family Endowment		
\$ 1,000	Price Family Scholarship		
\$ 3,252	Thomas M. Price Family Endowment		
\$ 928	George and Nerlene Ramsey Endowment Fund		
\$ 7,098	Richard and Violet Road Endowment Fund		
\$ 279	Linda Rohrman Family Endowment		
\$ 3,850	Marianne and Larry Rose Endowment		
\$ 116	Russell Family Endowment		
\$ 1,388	Scholarship Administration Fund		
\$ 572	Charlie Shook Endowment		
\$ 8,226	James C. Shook Endowment		
\$ 6,033	John and Jane Smith Family Endowment		
\$ 9,199	Kendall S. & Mary Carson Smith Fund		
\$ 994	Linda M. and Robert S. Sorensen Endowment		
\$ 5,462	Mary Jo and Tom Sparrow Endowment Fund		
\$ 2,902	STAT Endowment		
\$ 942	Dr. Jerome J. Stefaniak Endowment		
\$ 1,063	Suddarth Endowment		
\$ 12,327	Burr and Anne Louise Swezey Fund		
\$ 51,656	Unrestricted Fund		

GRANTS FROM DISCRETIONARY FUNDS

In 2021, discretionary scholarships totaling \$50,500 were awarded to 43 individuals and grants totaling \$650,236 were awarded to the following 45 organizations:

Art Museum of Greater Lafayette
 Aviation USA Aero
 Bach Chorale Singers, Inc.
 Big Brothers Big Sisters of Greater Lafayette, Inc.
 Boy Scouts of America, Sagamore Council
 Caregiver Companion Inc.
 Civic Theatre
 Food Finders Food Bank, Inc.
 Franciscan Health Foundation
 Friends of Downtown, Inc.
 Goodwill Industries
 Group Homes for Children
 Hanna Community Center
 Heartford House
 Homestead CS
 Hoosier Burn Camp, Inc.
 Junior Achievement of Greater Lafayette
 Lafayette Family YMCA
 Lafayette Tree Fund, Inc.
 Lafayette Urban Ministry
 Leadership Lafayette
 Long Center
 LTHC Homeless Services
 Lyn Treece Boys & Girls Club
 Matrix Lifecare Center
 Mental Health America - Wabash Valley Region
 Modern Mental Health, Inc.
 Museums of Prophetstown, Inc.
 NAMI West Central Indiana
 National Football Foundation And College Hall Of Fame Inc
 NICHES Land Trust
 Public Schools Foundation of Tippecanoe County
 Purdue Foundation, Inc.
 Right Steps Child Development Centers
 River City Community Center
 Robert and Ellen Haan Museum of Indiana Art
 Servants At Work, Inc.
 The Home with Hope, Inc.
 Thomas Duncan Hall, Inc.
 Tippecanoe County 4H Exhibit Association
 Tippecanoe County Historical Association
 Vision of Hope Ministries, Inc.
 Wabash Center, Inc.
 Willowstone Family Services
 YWCA of Greater Lafayette

How to Apply for a Grant

Because of the generosity of many donors, The Community Foundation of Greater Lafayette invests in Tippecanoe County nonprofit organizations that are tax-exempt under section 501 (c) 3 of the Internal Revenue Service Code and who have a clear mission, effective operations, proven success, strong staff and board leadership, responsible accounting and fiscal management, and sustainability.

over
\$2M
awarded in grants



Boy Scouts of America, Sagamore Council campers at Cary Camp

The Foundation likes to help organizations that collaborate with others, promote a thriving community, and respond to the needs of people in the neighborhoods and areas served.

GRANT GUIDELINES

Grants typically fund capital needs. The Foundation is especially interested in providing grants that further these impact areas: arts and humanities, education, environment and animals, health, human services, and public/society benefit.

Depending on the circumstances, The Foundation considers funding startup interim, emergency, operating

expenses, and programs. Requests from tax-supported organizations, such as schools, are also considered when tax money cannot be used for the purchase.

Review includes evaluating want versus need, potential impact, other funding sources, and the number of people who will benefit.

The Foundation does not fund endowments, program or capital acquisitions already completed, ongoing operating expenses, religious institutions, political organizations, or candidates.

GRANT APPLICATION DEADLINES

NOW Grants

Available any time from January 1 through November 30, 2022 less than \$10,000

Spring Community Grants

March 24, 2022, noon, \$10,000 and above

Fall Community Grants

July 28, 2022, noon, \$10,000 and above

Field-of-Interest Grants

June 1, 2022, noon, various amounts (see www.inspiringgreater.org)

- At-Risk Youth
- Cancer Research and Care
- Childhood Literacy
- Children's Needs
- Community Beautification
- Dog Rescue and Care Services
- Elder Care
- Health and Human Services
- Literacy
- Music Education for Disadvantaged Youth
- Suicide Prevention
- Wabash River Enhancement

Applications and guidelines are available at www.inspiringgreater.org. Those with questions after reading the guidelines should contact Gretchen Shelmon, Manager of Marketing, Communications, and Grants at gretchen@inspiringgreater.org.

Investing in Education

Scholarship-specific funds and other endowments with The Community Foundation regularly award scholarships to area students. For a full list and scholarship criteria, visit www.inspiringgreater.org

45

**scholarships awarded
to area youth.**

SCHOLARSHIP FUNDS

George Balfe Scholarship Fund,
in Honor of George Hamilton Balfe,
George Louis Balfe, and George
Dan Balfe

Tara Balfe Clifford Scholarship

Roger Blalock Scholarship Fund

Carroll High School Scholarship for
Women Pursuing STEM

Samuel J. Cole and Pearl Mae Fritts
Cole Scholarship Fund

Samuel C. Curtis Scholarship Fund

Jefferson High School Alumni
Association Scholarship

Shirley and Mick McTague
Scholarship Fund

Harlan W. and Dorothy W. Parr
Scholarship Fund

Roland G. Parrish/Black Cultural
Center Scholarship Fund

Presidential Leadership Scholarship
Endowment Fund in Honor of Tarrus
Richardson

Price Family Scholarship in Memory
of Thomas M. Price

David Smyser Scholarship Fund

Betty M. Suddarth Scholarship
Endowment Fund

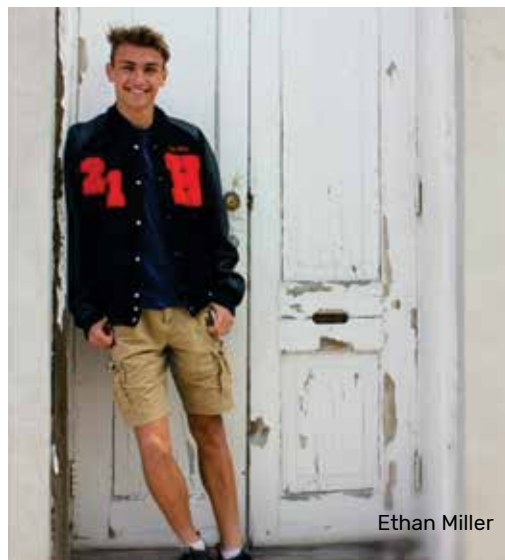
Katie Traynor RN Scholarship Fund

Truitt Family West Lafayette
High School Athletic Leadership
Scholarship

West Lafayette High School Golden
Scholarship Fund

Robert and Marilyn Whitsel
Scholarship Fund

Jacob E. and Mary Ann Wiebers
Scholarship Fund



"I have been so scared that my financial status would hold me back from achieving my goals ... so I give a big piece of my heart to all of the donors who help to fund this scholarship."

Leia Bryant | Samuel and Pearl Mae Fritts Cole Scholarship

2021 Scholarship Recipients

Carroll High School Scholarship for Women Pursuing STEM

Sarah Bhuiya | Purdue University
Anna Hildebrand | Purdue University
Madelyn Pequignot | Carroll High School
Alexandra Wright | Carroll High School

George Balfe Scholarship

Ashanti Bravo Flores | Jefferson High School

Roger Blalock Scholarship

Aryal Wilson | Purdue University

Samuel and Pearl Mae Fritts Cole Scholarship

Alexis Mitchell | Eldorado High School
Leia Bryant | Carrier Mills-Stonefort High School

Samuel C. Curtis Scholarship

Yvana Abig | Jefferson High School

Max and Elsie Goken Scholarship

Lauren Gustafson | Purdue University
Bay Ulery | Indiana University
Kinsey Williams | McCutcheon High School
Madeline Holder | Faith Christian High School

Robert and Dorothy Hughes Scholarship

Karissa Springer | Harrison High School
Faith Richards | McCutcheon High School

Jeff High School Alumni Association Scholarship

Diego Avalos | Jefferson High School
Jorje Gonzalez-Mejia | Jefferson High School

Mallory Johnson | Jefferson High School
Mallorie McGuire | Jefferson High School
Denisse Tavasci | Jefferson High School
Amy Walters | Jefferson High School
Hope Zickmund | Jefferson High School

Lilly Endowment Community Scholarships

Claudia Albrecht | McCutcheon High School
Elley Adkins | McCutcheon High School
Spencer Phillips | McCutcheon High School

Elizabeth Mackay Scholarship

Shelby Sliger | McCutcheon High School
Olivia Smith | McCutcheon High School

Shirley and Mick McTague Scholarship

Jose Carrillo | Purdue University

Harlan W. and Dorothy W. Parr Scholarship

Roberta Weiner | Purdue University

Roland G. Parrish Black Cultural Center Scholarship

Jasmine Pierce | Purdue University

Presidential Leadership Scholarship in Honor of Tarrus Richardson

Kameryn Davis | Purdue University

Price Family Scholarship in Memory of Thomas M. Price

Ethan Miller | William Henry Harrison High School

Purdue University Psychiatric Mental Health Nursing Scholarship

Leann Carpenter Sharp | Purdue University

Jacinta Langley | Purdue University

David Smyser Scholarship

Alison Cahoon | Jefferson High School

Betty M. Suddarth Scholarship

Olivia Richter | William Henry Harrison High School

Katie Traynor, RN Scholarship

Dana Christiansen | Purdue University
Abigail Tonkery | Purdue University

Truitt Family West Lafayette High School Leadership Scholarship

Gretchen Bauman | West Lafayette High School

Carson Cooke | West Lafayette High School

Robert and Marilyn Whitsel Scholarship

Ethan Miller | William Henry Harrison High School

Rachel Labi | West Lafayette High School

Jacob E. and Mary Ann Wiebers Scholarship

Madeline Holder | Faith Christian High School

West Lafayette High School Golden Scholarship

Ross Brummet | West Lafayette High School

Ava Doty | West Lafayette High School

"I am so grateful there are generous people like you in this world, you truly gift us with the opportunity to live a wonderful life."

Ethan Miller | Price Family Scholarship in Memory of Thomas M. Price and Robert and Marilyn Whitsel Scholarship

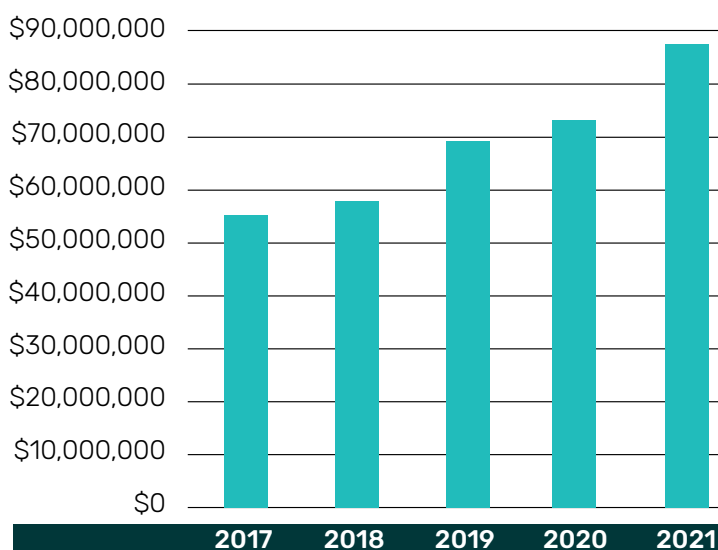
Fiscally Responsible

The Community Foundation's net assets totaled \$87.4M at year-end 2021. These charts highlight financial activities in 2021 and previous years. Copies of the latest audited financial statements are available at The Community Foundation of Greater Lafayette. The following financial reports include The Community Foundation of White County, an affiliate of The Community Foundation of Greater Lafayette.

**109 grants to nonprofits
45 scholarships totaling**

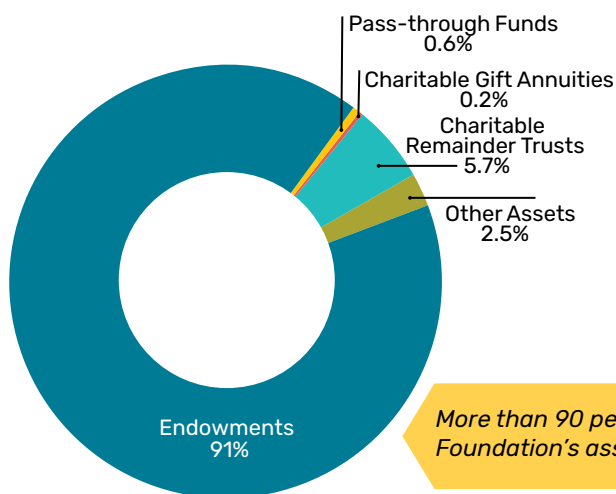
\$2.03M

FOUNDATION NET ASSETS



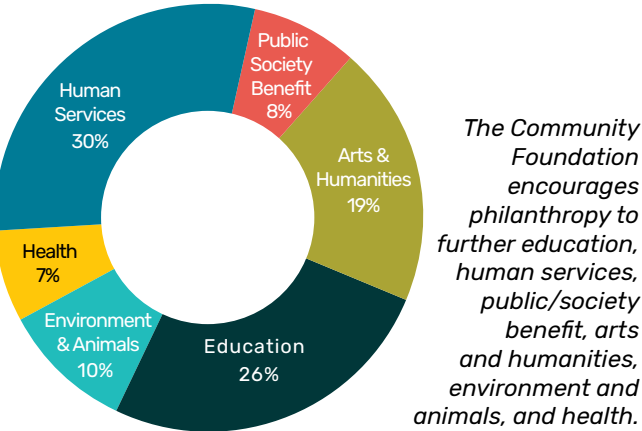
The Foundation's net assets totaled \$87.4M in 2021.

ASSETS MANAGED BY FOUNDATION

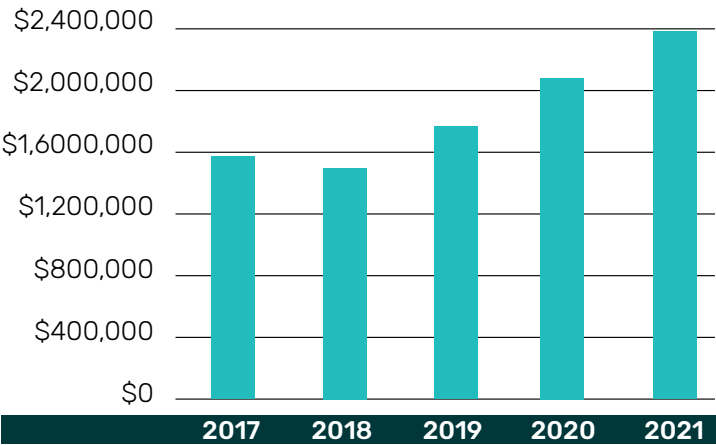


More than 90 percent of The Foundation's assets are endowments.

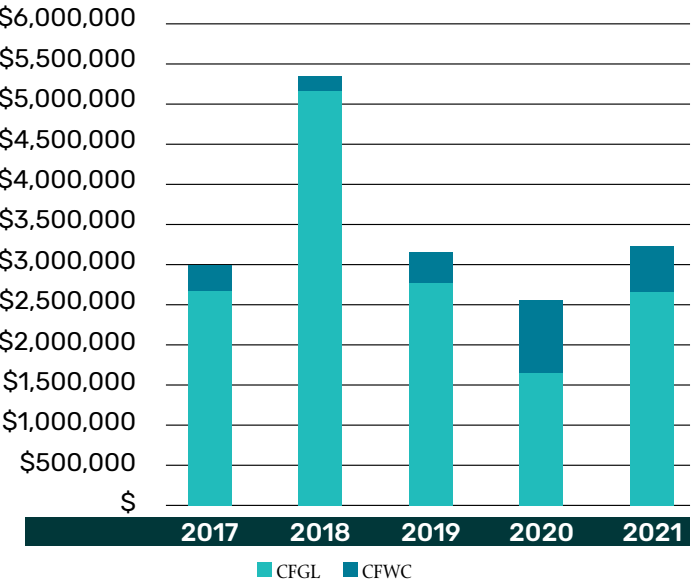
GRANTS BY CATEGORY



GRANTS

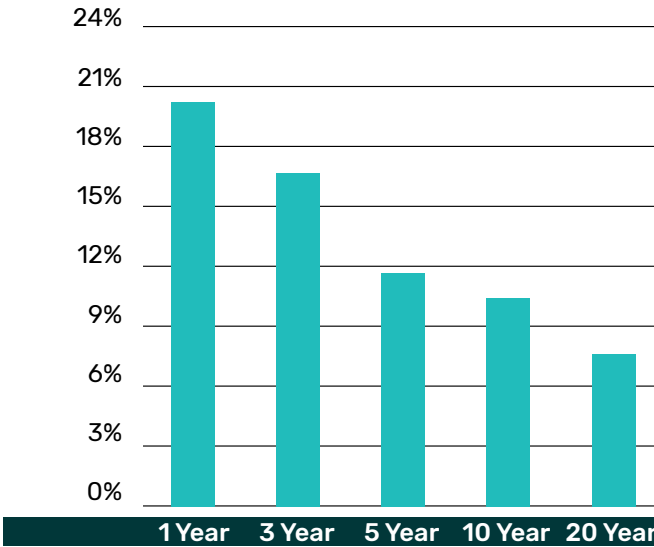


GIFTS RECEIVED



The Community Foundation received \$3,181,776 in gifts in 2021. Of that, \$2,612,883 was Community Foundation of Greater Lafayette and \$568,893 was Community Foundation of White County.

INVESTMENT PERFORMANCE





Tom Busch
Director



Brenda Clapper
Director



Pris Gerde
Director



Andy Gutwein
Chair



Gary Henriott
Director



Les Huddle
Director



W. David Lasater
President and CEO



Stephanie Long
Director



David McGaughey
Director



Rick Olson
Director



Linda Rohrman
Treasurer



Jennifer Russell
Secretary



Steve Schultz
Vice Chair



Greg Smith
Director



Connie Standiford
Director

Leading the Way

BOARD OF DIRECTORS

Officers

Andy Gutwein | Chair
Steve Schultz | Vice Chair
Jennifer Russell | Secretary
Linda Rohrman | Treasurer
W. David Lasater | President and CEO

Directors

Tom Busch
Brenda Clapper
Pris Gerde
Gary Henriott
Les Huddle
Stephanie Long
David McGaughey
Rick Olson
Greg Smith
Connie Standiford

OUR VALUED VOLUNTEERS

2021 Committee Members

Audit Committee

Andy Gutwein
Dave Luhman
David McGaughey
Linda Rohrman
Greg Smith | Chair
Steve Schultz

Development Committee

Beth Bangs
Chris Clopton
Pat Corey
Bill Gettings
Jeanne Gernhardt
Andy Gutwein | Chair
David McGaughey
Amber Turner

Finance Committee

Jim Gothard
Andy Gutwein
James Keene
Dave Luhman
John Martin
Rick Olson
Linda Rohrman
Jennifer Russell | Chair
Charlie Shook
A. Charlene Sullivan

Governance Committee

Brenda Clapper
Pris Gerde | Chair
Jeff Love
Dave Luhman
David McGaughey
Amy Moulton
Joe Seaman

Grants Committee

Tom Busch
Sana Booker
James Foster
Les Huddle | Chair
John Martin
Rick Olson
Linda Rohrman
Jennifer Russell
Greg Smith
Constance Standiford

Scholarship Committee

Peg Downham
Pris Gerde | Chair
Jeanne Gernhardt
Young Lee
Cody Mullen
Tom Pearson



THE COMMUNITY FOUNDATION STAFF

W. David Lasater
President and CEO

Amy Lageveen
Finance and Development Associate

Candy Silver
Director of Philanthropy

Gretchen Shelmon
Manager of Marketing,
Communications, and Grants

Angela Strader
Director of Finance and Operations

Affiliate

COMMUNITY FOUNDATION OF WHITE COUNTY

PO Box 1154 Monticello, IN
47960-1154 (574) 583-6911
www.cfwhitecounty.org

Leslie Goss
Executive Director

Lucy Dold
Executive Assistant

Learn More:

www.inspiringgreater.org

WEBSITE HIGHLIGHTS

FOR DONORS

Ways to give
How to establish a fund
Types of funds
Donate online

FOR GRANT / SCHOLARSHIP APPLICANTS

General information
How to apply
Scholarship list

FOR PROFESSIONAL ADVISORS

General information
Gold Key Society

**COMMUNITY
FOUNDATION
OF GREATER
LAFAYETTE**
Inspiring Greater

The Life Building
Downtown Lafayette
300 Main St.
Suite 100
Lafayette, IN 47901

(765) 742-9078
www.inspiringgreater.org

